



Kr
milla
apartment



ABOUT THE COMPANY

Krupaluji Constructions Pvt. Ltd. is incorporated under Companies Act. 1956 and has given a remarkable milestone in the field of real estate & infrastructure development, with the Directorship of Mr. Raj Kumar Pattnaik, who is also one of the Directors of M/s. Kalinga Builders Pvt. Ltd. which is the oldest pioneer construction company in Odisha. Krupaluji Constructions Pvt. Ltd. enriched with expertise, experience & goodwill of Mr. Raj Ku. Pattnaik and his predecessor Late Mr. Pratap Pattnaik, the founder of M/s. Kalinga Builders Pvt. Ltd. He has done a numerous successful projects at various points of Temple City, Bhubaneswar. Some of the ongoing & completed projects are given herewith.

ONGOING PROJECT

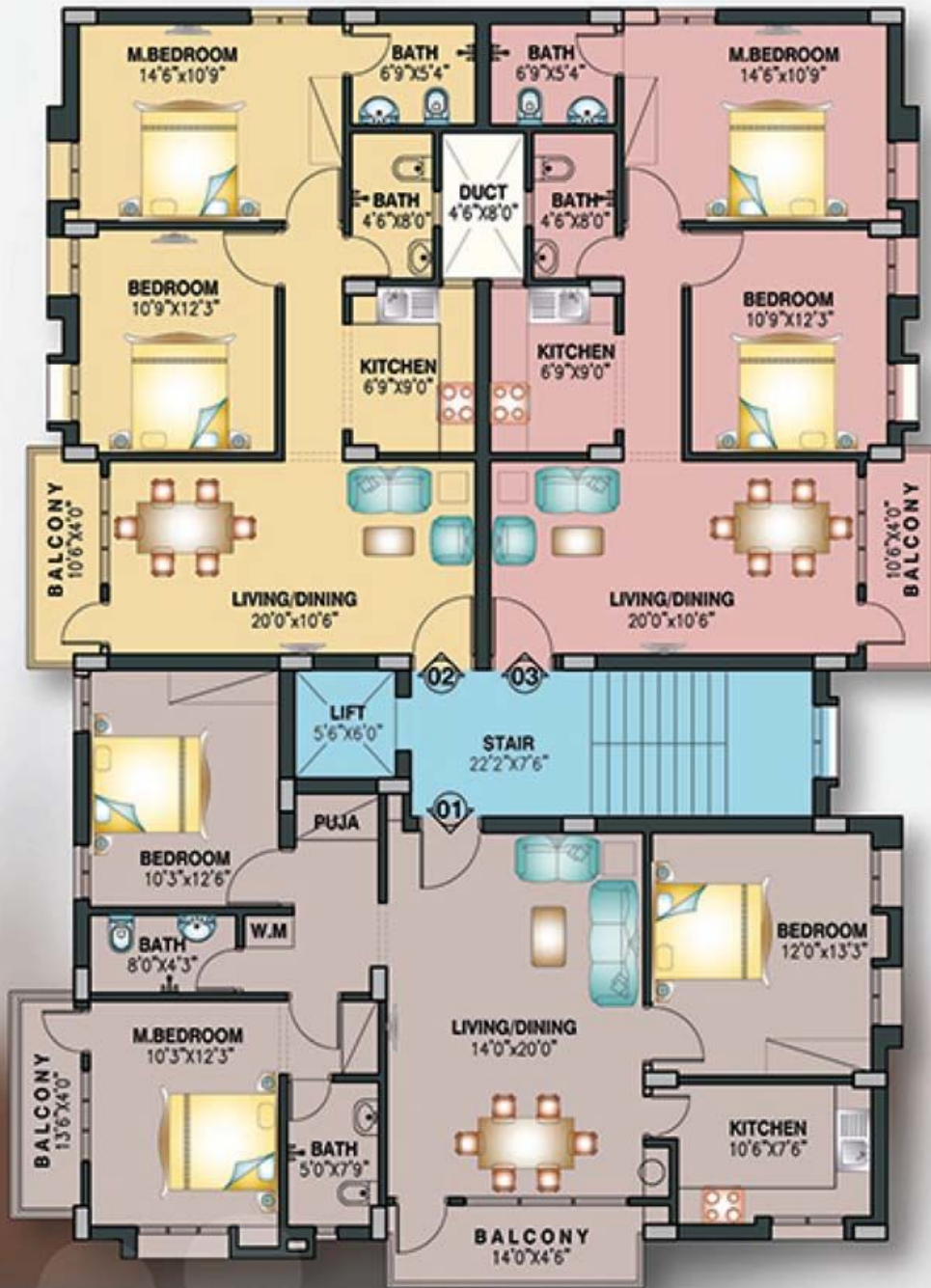
- Urmilla Apartment, Patrapara
- Krishna Plaza, Nayapalli
- Kripalu Residency, Kalarahanga
- VITS Engineering College, Khurda

COMPLETED PROJECT

- Kedargauri Apartment, Garage Square
- Gauri Garden Phase-I, Garage Square
- Gauri Garden Phase-II, Garage Square
- Akashdeep Tower, Old Town
- Snehalata Apartment, Old Town
- Vivekananda Vihar, Old Town
- Rajendra Park, Forest Park
- Bharati Tower, Forest Park
- Satyasai Enclave, Kolathia
- Lingaraj Vihar, Pokhariput
- Krishna Tower, NH5, Nayapalli
- Madhav Vihar, Cuttack Road
- Vaisakha Enclave, Cuttack Road
- BMC Keshari Mall, Unit-II
- Shyamkunj, Cuttack
- Prasanti Apartment, Cuttack
- Kathajodi Enclave, Cuttack
- Club Town, Patia
- Westend Tower, Patia







AREA STATEMENT

2 BHK	3 BHK
SBA=1046SFT.	SBA=1540SFT.



TYPICAL FLOOR PLAN

SPECIFICATION

GENERAL

- Aesthetically designed entrance lobby
- Premium Marble & Granite flooring in lift lobbies, corridors up to 1st floor landing
- Polished kota stone staircases from 1st floor onwards
- Power backup

ROOMS

- Vitrified tile flooring in living and dining room
- Vitrified tile flooring in master & other bed rooms
- Premium quality plastic emulsion paint over wall putty for internal wall and ceiling
- Sliding plain aluminum anodized windows
- Teak finished mica flush door for main entrance & solid core
- Painted flush doors for other rooms

KITCHEN

- Vitrified tile flooring
- Granite platform with stainless steel sink and drain board
- 2 feet high ceramic tile dado above kitchen platform
- Exhaust fan

BALCONIES

- Ceramic tile with timber finish
- MS Railing

ELECTRICAL FITTINGS

- Modular switches
- Sufficient points in all rooms
- Concealed copper wiring
- AC point in all bedrooms and living and dining room
- Cable TV and telephone points in living room and master bedroom

BATHROOMS / TOILETS

- Anti Skid ceramic tile flooring
- Ceramic tile dado up to door height
- Superior quality CP fitting and fixtures
- Concealed plumbing
- Premium quality WC and WB
- Geezer point provision
- Exhaust fan

SECURITY

- Premium brand main entrance door lock
- Integrated security-Boom gate and intercom

PAYMENT SCHEDULE

	On Booking	5%
Apr'14	1st Month	10%
May'14	2nd Month 50% of Parking	10%
Jun'14	3rd Month 25% of Parking	10%
Aug'14	5th Month 25% of Parking	10%
Oct'14	7th Month	10%
Dec'14	9th Month	10%
Feb'15	11th Month	10%
Apr'15	13th Month	10%
Jun'15	15th Month	5%
Aug'15	17th Month	5%
	On Possesion	5%



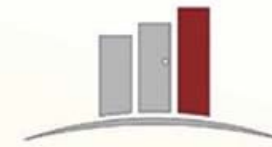
LOCATION MAP



DISCLAIMER

The material and visuals in this brochure are artist illustrations and impressions of the proposed development of the project. The areas, units, buildings, layout, demarcations, plans, amenities, access, descriptions, dimensions, elevations, facilities, specifications, fittings, fixtures, furniture and various other features relating to the project, are all tentative and under finalisation; not part of the standard agreement, and are subject to change from time to time at developer's sole discretion (without prior notice or obligation). This brochure is issued for general guidance only and does not constitute any assurance, claim, offer, inducement, invitation or representation for any purpose whatsoever.

DEVELOPER



KRUPALUJI
CONSTRUCTIONS PVT. LTD.

Plot No.9, Sahidnagar, Bhubaneswar-751007
Odisha, Ph No.0674-2542136

ARCHITECT



GRAND ARCHITECTS

Plot No.9, Sahidnagar, Bhubaneswar
Email: chitta33@gmail.com,
Tel: (0091)9437282924

MARKETED BY